

## Ordering Information

### Palodent® Matrix Systems

#### 659600 Complete System

100 Palodent® Plus Matrices – 25 each size: 3.5mm, 4.5mm, 5.5mm, 6.5mm  
75 Palodent® Plus Wedges – 25 each size: Small, Medium, Large  
30 Palodent® Plus WedgeGuards – 10 each size: Small, Medium, Large  
1 Palodent® Plus Universal Ring  
1 Palodent® Plus Narrow Ring  
1 Palodent® Plus Forceps  
1 Palodent® Plus Pin Tweezers  
24 Palodent® 360 Matrices – 5.5mm

#### Palodent® Plus Sectional Matrix System



#### 659880 Trial Kit

10 Matrices – Size 5.5mm  
10 Medium Wedges  
10 Medium WedgeGuards  
1 Universal Ring; 1 Forceps; 1 Pin Tweezers  
5 SureFil® SDR® flow+ Compula® Tips – Universal Shade (0.25g ea)

#### 659670 EZ Coat Introductory Kit

100 Matrices – 20 each size: 3.5mm, 4.5mm, 5.5mm, 6.5mm, 7.5mm  
75 Wedges – 25 each size: Small, Medium, Large  
30 WedgeGuards – 10 each size: Small, Medium, Large  
1 Universal Ring; 1 Narrow Ring  
1 Forceps; 1 Pin Tweezers

#### Ring Refill

659760 Universal (2)  
659770 Narrow (2)

#### Matrix Refill

659710 3.5mm (50)  
659720 4.5mm (50)  
659730 5.5mm (50)  
659740 5.5mm (100)  
659750 6.5mm (50)  
659860 7.5mm (50)

#### EZ Coat Matrix Refill

659610 3.5mm (50)  
659620 4.5mm (50)  
659630 5.5mm (50)  
659640 5.5mm (90)  
659650 6.5mm (50)  
659660 7.5mm (50)

#### Wedge Refill (100)

659780 Small – Dark Blue  
659790 Medium – Medium Blue  
659800 Large – Light Blue

#### WedgeGuard Refill (50)

659830 Small – Dark Blue  
659840 Medium – Medium Blue  
659850 Large – Light Blue

#### 659810 Forceps Refill (1 pack)

659820 Pin Tweezers Refill  
(1 pack)

### Palodent® 360

#### Circumferential Matrix System

#### Matrix Band Refill

659601 4.5mm (48)  
659602 5.5mm (48)  
659603 6.5mm (48)



For more information and to request a demo,  
contact your Dentsply Sirona Representative.

Dentsply Sirona | 13320-B Ballantyne Corporate Place | Charlotte, NC 28277 | 1-800-532-2855 | [www.class2restorations.com](http://www.class2restorations.com)

Competitor brands are not registered trademarks of Dentsply Sirona. ©2019 Dentsply Sirona Inc. All rights reserved ML590019B (R 9-4-19)



Accurate contacts  
and contours at  
your fingertips.



Palodent® Plus  
Sectional Matrix System

Palodent® 360  
Circumferential Matrix System

# A tight seal. Predictable contacts. The right contours for clinical success.

**97%**

of clinicians say that achieving **proper isolation** of a Class II cavity is difficult in at least 1 out of 10 cases.<sup>1</sup>

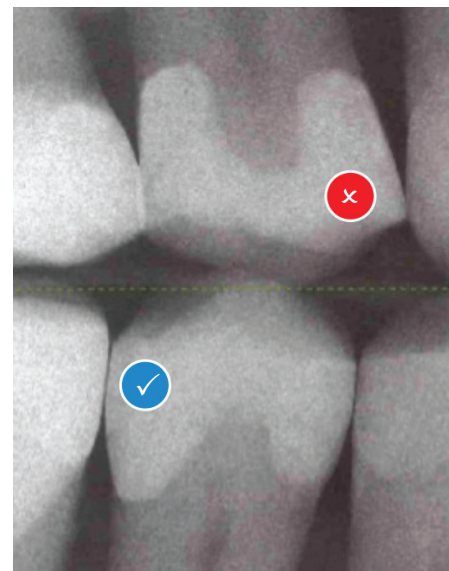
**70%**

of clinicians find **contact creation** to be the most challenging part of a Class II restoration.<sup>2</sup>

Palodent® matrix systems help you achieve reliable isolation with a tight gingival seal. With Dentsply Sirona's advanced designs, recreating accurate interproximal contacts has never been so easy and predictable. And the anatomically shaped matrices deliver natural contours for better clinical outcomes—without bulky equipment, obstructions to your working room, or the need for extensive interproximal finishing.

## Throw away your Tofflemire.

The Tofflemire was introduced in 1946 to aid in placement of dental amalgam. Today, it's obsolete technology that can lead to clinical failure when used with modern composite resins.<sup>3</sup> Dentsply Sirona has continuously improved matrix technology to deliver the most advanced sectional and circumferential systems available: Palodent® matrix systems for simpler, better restorations.



### Tofflemire circumferential band restoration

- ✗ Bulky, awkward system
- ✗ Failure to restore proximal anatomy, increasing risk of fracture, recurrent caries and periodontal disease
- ✗ Thin or open contact at the marginal ridge with large food trap below
- ✗ Extensive finishing required

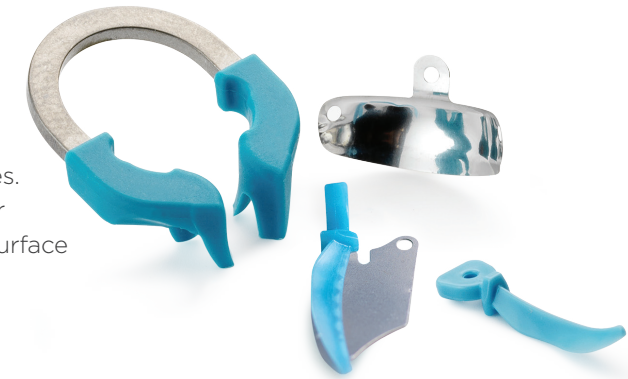
### Palodent® matrix system restoration

- ✓ Easy to use
- ✓ Natural contours
- ✓ Tight, anatomically correct contacts
- ✓ Minimal interproximal finishing

## Palodent® Plus Sectional Matrix System

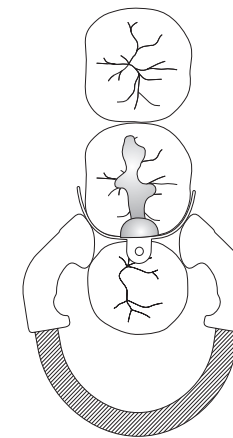
FOR USE WITH  
CLASS II TOTAL PRACTICE SOLUTION

Easily achieve natural contours and tight contacts for improved outcomes. The Palodent® Plus system is ideal for composite restoration of most two-surface proximal Class II cavities.

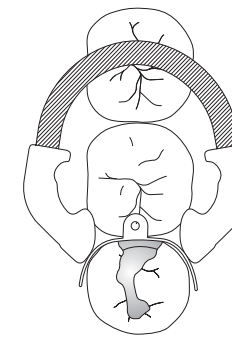


### Use the Palodent® Plus system for:

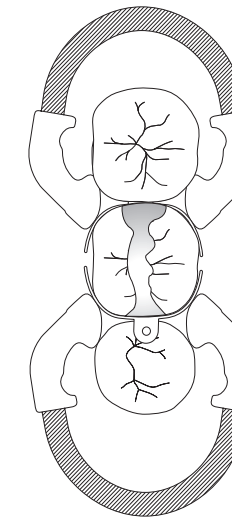
Mesial-occlusal



Distal-occlusal



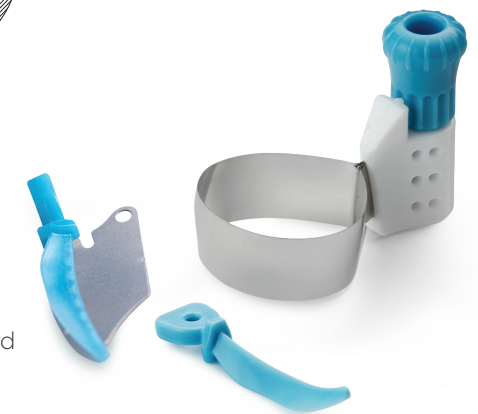
Mesial-occlusal-distal



## Palodent® 360 Circumferential Matrix System

FOR USE WITH  
CLASS II TOTAL PRACTICE SOLUTION  
SINGLE-UNIT CROWN WORKFLOW SOLUTIONS™

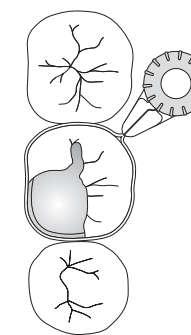
Provide natural contours and optimal contacts with a simple twist of the fingers—no awkward retainers or applicators required.



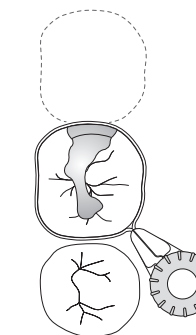
Choose the Palodent® 360 system for Class II cases where a sectional matrix can't be used and for single-unit crown core build-up procedures.

### Use the Palodent® 360 system for:

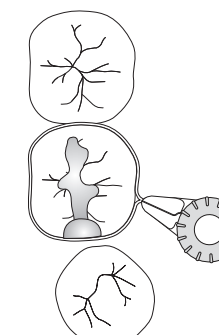
Missing cusp



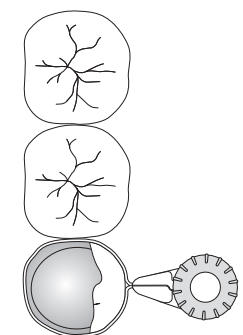
Missing adjacent tooth



Misaligned tooth



Tooth isolation for core build-up



**TIP**

To seat in tight interproximal spaces, pre-wedge using a Palodent® Plus retaining ring or a wooden wedge to temporarily create the required space.

1. Dental Learning Systems, Direct Restoratives Survey, May 2016. N=143

2. DentalTown (2012). Restorative Dentistry. Monthly Poll: What is the most challenging part of Class II Restoration?

3. Owens BM, Phebus JG. An evidence-based review of dental matrix systems. "General Dentistry," September/October 2016